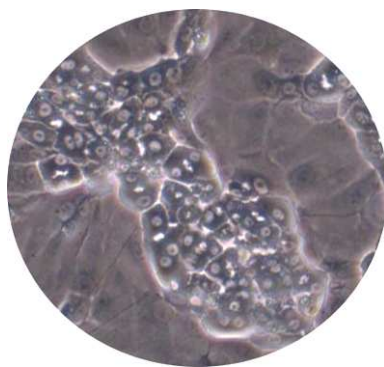


DIFFERENTIATED HepaRG[®] CRYOPRESERVED

DESCRIPTION AND USE GUIDE FOR THE THAWING, CULTURE, AND USE OF CRYOPRESERVED, DIFFERENTIATED HEPARG[®] CELLS



HepaRG[®] cells have the unique properties of maintaining significant levels of hepatic cell functions, of being CYP450 inducible and supporting the complete replicative cycle of HBV.

This description and use guide for the thawing and culture of cryopreserved differentiated HepaRG[®] includes three sections:

Section 1: recommended materials, media and cells

Section 2: protocol for the thawing, seeding and maintenance of differentiated HepaRG[®] cells

Section 3: cell morphology

LIMITED USE LICENSE

HepaRG[®] cells are patented and their use is strictly limited; consider the cells as a single-use, disposable product that must be destroyed upon conclusion of a study or experiment. Propagating, reproducing, cloning, subcloning or any other use of the cells following the conclusion of a study is prohibited. Use of the cells to produce or manufacture commercial products for general sale or for use in the manufacture of products intended for general sale is prohibited. Transfer of the cells to anyone not employed within the same organization, whether for financial benefit or not, is prohibited. **If you are unwilling to accept the terms of this LIMITED USE LICENSE, do not use them, and immediately return the cells for credit. Violators of this Limited Use License will be prosecuted to the fullest extent of the law.**

SECTION 1: MATERIALS, MEDIA AND CELLS

1 Materials

- Water bath at +37°C
- Laminar flow hood
- Pipet-aid, pipettes and micropipettes
- Multichannel pipettes
- Polystyrene round-bottom tubes (40 mL) and petri dishes (92 x 17 mm) or similar containers
- Incubator at +37°C, 5% CO₂ and saturating humidity
- Phase-contrast microscope
- Material for cell count (cell counting chamber, coverslips, 0.05% Trypan blue solution)

2 Coated Plates

The following are provided by BIOPREDIC International with HepaRG[®], HPR116.

Designation	Reference	Conditions of	
		Shipping	Storage
25 cm ² flask coated with collagen I*	FLA125	+4°C	+4°C
6-well plate coated with collagen I*	PLA135	+4°C	+4°C
12-well plate coated with collagen I*	PLA138	+4°C	+4°C
24-well plate coated with collagen I*	PLA137	+4°C	+4°C
48-well plate coated with collagen I*	PLA139	+4°C	+4°C
96-well plate coated with collagen I*	PLA136	+4°C	+4°C

*BPI proprietary coating process to ensure proper seeding and culture of the HPR116

3 Media

The following are provided by BIOPREDIC International

Designation	Reference	Volume	Conditions of	
			Shipping	Storage
Basal hepatic cell medium	MIL600	100 mL	Room temperature	+4°C
HepaRG [®] Thaw, Seed, and General Purpose Supplement	ADD670	For 100 mL	-20°C or lower	
HepaRG [®] Maintenance / Metabolism Supplement	ADD620	For 100 mL	-20°C or lower	
HepaRG [®] Induction Supplement	ADD640	For 100 mL	-20°C or lower	
HepaRG [®] Serum-free Induction Supplement	ADD650	For 100 mL	-20°C or lower	

4 Cells (Immediately place the cryovial(s) in liquid nitrogen upon receipt)

HepaRG [®] cells	Number of viable cells / vial (x10 ⁶)	Reference	Conditions of	
			Shipping	Storage
Cryopreserved differentiated HepaRG [®] cells	≥ 8	HPR116-TA08	Dry ice	Liquid nitrogen
Cryopreserved differentiated HepaRG [®] cells	≥ 12	HPR116-TA12*	Dry ice	Liquid nitrogen

*For Japan only

SECTION 2: PROTOCOL

**NOTE: OBSERVE UNIVERSAL PRECAUTIONS WHEN HANDLING HepaRG[®] CELLS AND TREAT ALL BIOLOGIC MATERIAL AS POTENTIALLY INFECTIOUS.
THE FOLLOWING STEPS MUST BE PERFORMED UNDER A LAMINAR FLOW HOOD**

1. Media preparation

1.1 HepaRG[®] THAW, SEED, AND GENERAL PURPOSE MEDIUM 670

- Thaw the HepaRG[®] Thaw, Seed and General Purpose Supplement (ADD670) by placing the bottle in a +37°C water bath until completely thawed.
- Reconstitute the HepaRG[®] Thaw, Seed and General Purpose Medium 670 by adding the supplement (ADD670) to the bottle of Basal Hepatic Cell Medium (MIL600).
- The reconstituted HepaRG[®] Thaw, Seed and General Purpose Medium 670 is now ready for use. It should be stored at +4°C for a maximum of one month.

1.2 HepaRG[®] MAINTENANCE AND METABOLISM MEDIUM 620

- Thaw the HepaRG[®] Maintenance and Metabolism Supplement (ADD620) by placing the bottle in a +37°C water bath until completely thawed.
- Reconstitute the HepaRG[®] Maintenance and Metabolism Medium 620 by adding the supplement (ADD620) to the bottle of Basal Hepatic Cell Medium (MIL600).
- The reconstituted HepaRG[®] Maintenance and Metabolism Medium 620 is now ready for use. It should be stored at +4°C for a maximum of one month.

1.3 HepaRG[®] INDUCTION MEDIUM 640

- Thaw the HepaRG[®] Induction Supplement (ADD640) by placing the bottle in a +37°C water bath until completely thawed.
- Reconstitute the HepaRG[®] Induction Medium by adding the supplement (ADD640) to the bottle of Basal Hepatic Cell Medium (MIL600).
- The reconstituted HepaRG[®] Induction Medium is now ready for use. It should be stored at +4°C for a maximum of one month.

1.4 HepaRG[®] SERUM FREE INDUCTION MEDIUM 650

- Use ADD650 in place of ADD640 if you prefer to use Serum-free medium; in such an instance, follow all the steps in 1.3 for use of ADD640 but use ADD650 instead.

2. Thawing and counting of cryopreserved, differentiated HepaRG[®] cells (Day 0)

2.1 Thawing

- Pre-warm the HepaRG[®] Thaw, Seed and General Purpose Medium 670 (see 1.1) in the +37°C water bath.
- Pipet 9 mL (per HepaRG[®] cryovial to be used) of pre-warmed HepaRG[®] Thaw, Seed, and General Purpose Medium 670 into a sterile 40 mL polystyrene round-bottom tube or similar container.
- Prepare an absorbent paper with 70% ethyl alcohol.
- Remove the cryovial from the liquid nitrogen.
- Under the laminar flow hood, briefly twist the cap a quarter turn (do not open the cryovial completely) to release the internal pressure, and then close it again.
- Quickly transfer the cryovial to the water bath at +37°C. **Do not submerge it completely, being careful not to allow water to penetrate into the cap.** While holding the tip of the cryovial, gently agitate the vial for about 2 minutes. Small ice crystal should remain when removed from the water batch.
- Wipe the outside of the cryovial with 70% ethyl alcohol on an absorbent paper, and place the cryovial under the laminar flow hood.
- Aseptically transfer the “semi”-thawed HepaRG[®] cell suspension into the tube containing 9 mL of the pre-warmed HepaRG[®] Thaw, Seed, and General Purpose Medium 670 (resulting in a 1:10 ratio of cell suspension to total volume).
- Rinse out the cryovial once with approximately 1 mL of the HepaRG[®] Thaw, Seed and General Purpose Medium 670 and return the resulting suspension to the 40 mL tube.
- Centrifuge the differentiated HepaRG[®] cell suspension **DURING 3 MIN AT 500G** at room temperature (do not follow hepatocyte protocol for centrifugation, the HepaRG[®] cells are smaller in size and need a longer and faster centrifugation).
- Aspirate the supernatant. To avoid aspiration of cells, let a little volume of medium on the pellet. Resuspend **gently** the differentiated HepaRG[®] cell pellet with HepaRG[®] Thaw, Seed and General Purpose Medium 670 in 5 mL for HPR116-TA08, or 7 mL for HPR116-TA12. **Don't try to dissociate the bigger clusters.**

2.2 Cell viability measurement and counting

Cell viability measurement and cell counting are determined by trypan blue (0.05% in D-PBS 1X) exclusion test.

- Transfer 900 µL of trypan blue solution (0.05% in D-PBS 1X) in a 5 mL polystyrene round bottom tube.
- Prepare a cell counting chamber (e.g., Nageotte chamber). To prepare the counting chamber the mirror-like polished surface is carefully cleaned with lens paper. The coverslip is also cleaned. The coverslip is placed over the counting surface before prior to putting on the cell suspension.
- Gently homogenize the cell suspension by manual swirling.
- Dilute 100 µL of the cell suspension in the 900 µL of trypan blue solution at 0.05%.
- Gently homogenize the obtained cell suspension.

- Introduce with a pipette around 100 µL of cell suspension between mirror-like polished surface and coverslip. The area under the coverslip fills by capillary action. Enough liquid should be introduced so that the mirrored surface is just covered.
- Proceed to observation under microscope.

Count living and dead cells on at least four rows distributed throughout the cell counting chamber. Living cells exclude the dye, dead cells take up the dye and appear blue. If the total number of cells is quite different from one row to another, count one or two more rows.

Careful: Thawed differentiated HepaRG cells can form clusters. It's necessary to count all the cells including those forming the clusters.

- Determine the average number of viable cells and dead cells per row.
- Determine percentage of cell viability.

$\frac{\text{Number of viable cells} \times 100}{\text{Number of viable cells} + \text{number of dead cells}}$
--

- Calculate the cell concentration in million cells / ml.

Sample calculation with a Nageotte chamber:

$\text{Number of viable cells per row} \times 10 \text{ (dilution factor in trypan blue)} \times 800 \text{ (parameter relating to the Nageotte cell)} = M \text{ cell/mL}$

- Calculate the total viable cell number:

$\text{Cell concentration in million cells / ml} \times \text{Total volume of cell suspension} = \text{total number of cells}$
--

3. Use of differentiated HepaRG[®] cells

3.1 METABOLISM studies: use of HepaRG[®] IN SUSPENSION

- After thawing and counting of differentiated HepaRG[®] cells (Sec 2), cells can be used for the metabolism studies in suspension according to your standard protocol with human hepatocytes.
- Incubate the cells with the test substrates according to your protocol for metabolism studies.

SUSPENSION	Day 0	<ul style="list-style-type: none"> - Thaw the cells in HepaRG[®] Thaw, Seed and General Purpose Medium 670 - Incubate the cells with the test substrates according to your protocol
-------------------	--------------	--

3.2 METABOLISM studies: use of HepaRG[®] IN MONOLAYER

3.2.1 Cell seeding

- After the thawing and the counting of differentiated HepaRG[®] cells (Sec 2), and using the Thaw, Seed, and General Purpose Medium 670, seed the differentiated HepaRG[®] cells into flat-bottom multi-well plate(s)) or flask(s) according to the table below:

Cryopreserved differentiated HepaRG [®] cells			
Cell culture support	Number of viable cells per well (x10 ⁶)	Volume per well/flask (mL)	Cell concentration (x10 ⁶ /mL)
25 cm ² flask	5.2	5	1.04
6 well plate	2	2	1
12 well plate	0.8	1	0.8
24 well plate	0.48	0.5	0.96
48 well plate	0.16	0.2	0.8
96 well plate*	0.072	0.1	0.72

* If 96 well plate(s) are seeded partially, fill the wells surrounding those containing the cells with sterile water.

- Except for the 96 well-plates, gently agitate the supports (in a back-and-forth and side-to-side manner) and visually control the homogeneity of the cell distribution.
- Place the plate(s) or flask(s) in the incubator at +37°C, 5% CO₂ and saturating humidity.

3.2.2 Cell maintenance for metabolism studies

You have two options:

Either use the cells immediately after thawing, or following at least 3 days of culture. HepaRG[®] keep a high level of CYP activities during the first 24 hours following thaw and plating, and these activities then decrease while the cells reconstitute the monolayer, then the activities return during the fourth day in culture, peaking at Day 7.

➤ **At day 0, 4 hours after plating**

- Four hours after plating, observe cell morphology under phase-contrast microscope, and when possible, take photomicrographs.
- Cells can be used for the metabolism studies according to your standard protocol with human hepatocytes.
- Incubate the cells with the test substrates according to your protocol for metabolism studies.

MONOLAYER Day 0	4 hours after plating	<ul style="list-style-type: none"> - Thaw and seed the cells using HepaRG[®] Thaw, Seed, and General Purpose Medium 670 - Four hours after plating, incubate the cells with the test substrates according to your protocol
----------------------------	----------------------------------	---

➤ **Day 4-Day 7**

- One day after thawing, observe cell morphology under phase-contrast microscope, and when possible, take photomicrographs.
- Change from the HepaRG[®] Thaw, Seed, and General Purpose Medium 670 to the HepaRG[®] Maintenance and Metabolism Medium 620.

For 12-24-48-96 well plate(s):

- Pre-warm the HepaRG[®] Maintenance and Metabolism Medium 620 in a sterile container (12 mL/24 or 12 well plate, 9.6 mL/48 or 96 well plate, plus a little extra) at room temperature.
- Transfer the HepaRG[®] Maintenance and Metabolism Medium 620 pre-warmed into a 92 x 17 mm Petri dish or similar flat-bottom container suitable for use with multichannel pipette.
- Remove the lid from the multi-well plate.
- Remove the existing medium from the wells.
- Gently add the pre-warmed HepaRG[®] Maintenance and Metabolism Medium 620 to the sides of each well with a multichannel pipette (for volume per well, see upper table in paragraph 3.2.1). Do not add the medium directly onto the cells.
- Control visually the medium level in the wells.
- Put the lid back on the multi-well plate and place the plate(s) back in the +37°C incubator.

For 6 well plate(s):

- Pre-warm the HepaRG[®] Maintenance and Metabolism Medium 620 in a sterile container (12 mL/6 well plate) at room temperature.
- Remove the lid from the multi-well plate.
- Remove the existing medium from the wells.
- Gently add the pre-warmed HepaRG[®] Maintenance and Metabolism Medium 620 to the sides of each well with a pipette (2 mL per well). Do not add the medium directly onto the cells.
- Control visually the medium level in the wells.
- Put the lid back on the multi-well plate and place the plate(s) back in the +37°C incubator.

For 25 cm² flask(s):

- Pre-warm the HepaRG[®] Maintenance and Metabolism Medium 620 at room temperature.
 - Remove the cap from the flask(s).
 - Aspirate the existing medium from the flask.
 - Transfer 5 mL of pre-warmed HepaRG[®] Maintenance and Metabolism Medium 620 into the 25 cm² flask. Take care not to pipette down the medium directly on the cells.
 - Replace the cap on the flask and place the flask(s) back in the +37°C incubator.
- Maintain the HepaRG[®] cells in HepaRG[®] Maintenance and Metabolism Medium 620 and use the cells:

○ **At Day 4**

At day 4 after thawing and culture: a cell monolayer can be observed with a hepatocyte-like cell organization in clusters and metabolic activities are slightly lower than activities detected from fresh cells.

MONOLAYER Use at Day 4	Day 0	Thursday	Thaw and seed the cells using HepaRG [®] Thaw, Seed, and General Purpose Medium 670
	Day 1	Friday	Remove HepaRG [®] Thaw, Seed, and General Purpose Medium 670, and replace with the HepaRG [®] Maintenance and Metabolism Medium 620
	Day 4	Monday	Incubate the cells in monolayer with the test substrates according to your protocol

- **At Day 7** for optimal activity levels, Maintenance and Metabolism Medium 620 must have been renewed at Day 4 and Day 6.

At day 7 after thawing and culture: cells are organized in well-delineated trabeculae with many bright canaliculi-like structures and basal metabolic activities similar to fresh cells.

MONOLAYER Use at Day 7	Day 0	Thursday	Thaw and seed the cells using HepaRG [®] Thaw, Seed, and General Purpose Medium 670
	Day 1	Friday	Remove HepaRG [®] Thaw, Seed, and General Purpose Medium 670, and replace with HepaRG [®] Maintenance and Metabolism Medium 620
	Day 4	Monday	Renew the HepaRG [®] Maintenance and Metabolism Medium 620
	Day 6	Wednesday	Renew the HepaRG [®] Maintenance and Metabolism Medium 620
	Day 7	Thursday	Incubate the cells in monolayer with the test substrates according to your protocol

- Cells can be used for the metabolism studies from Day 4 to Day 7 according to your standard protocol with human hepatocytes. They can also be kept in HepaRG[®] Maintenance and Metabolism Medium 620 for 1 additional week, provided that renewal of the HepaRG[®] Maintenance and Metabolism Medium 620 is performed every 2-3 days.

3.3 INDUCTION studies: use of HepaRG[®] IN MONOLAYER

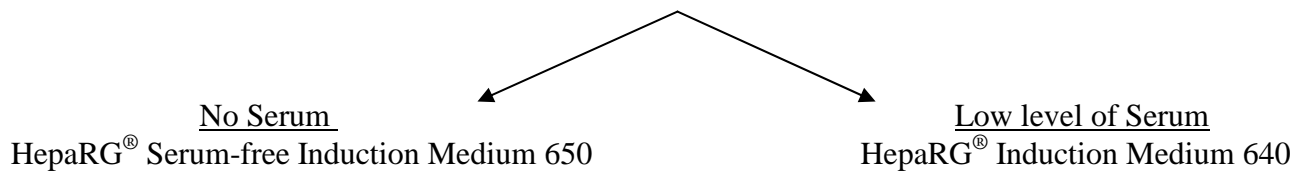
3.3.1 Cell seeding

See 3.2.1

3.3.2 Culture and maintenance for induction study

- Six hours after plating (see the suggested timeline), observe cell morphology under phase-contrast microscope, and when possible, take photomicrographs.
- Renew the HepaRG[®] Thaw, Seed, and General Purpose Medium 670 (for method, see 3.2.2).
- At day 3, observe cell morphology under phase-contrast microscope, and when possible, take photomicrographs.

- Cells can be used for induction studies: choose between two media with:



- Change from the HepaRG® Thaw, Seed, and General Purpose Medium 670 to either the HepaRG® Induction Medium 640 or HepaRG® Serum-free Induction Medium 650 with the test articles.
- Incubate the cells with the test articles for 48h.
- Renew the medium with the test articles daily and always with the medium chosen at the beginning of the study (either HepaRG® Induction Medium 640 or HepaRG® Serum-free Induction Medium 650).

Note: Maximal fold induction of metabolic activity may be achieved with 72h treatment time, but Biopredic's data indicate that 48h of treatment is sufficient to demonstrate significant induction of CYP1A2, CYP2B6, and CYP3A4 metabolic activity using prototypical inducers.

3.3.3 Suggested timeline for induction studies

Day 0	Friday morning	Thaw and seed the cells using HepaRG® Thaw, Seed, and General Purpose Medium 670
Day 0	Friday end of afternoon (6 h after plating)	Renew the HepaRG® Thaw, Seed, and General Purpose Medium 670
Day 3	Monday morning	Remove the HepaRG® Thaw, Seed, and General Purpose Medium 670, and replace with the HepaRG® Induction Medium 640 or HepaRG® Serum-free Induction Medium 650 Incubate the cells in monolayer with the test articles according to your study design. The renewal of the medium with the test articles should be performed daily until Wednesday
Day 4	Tuesday morning	Renew the Induction Medium 640 or HepaRG® Serum-free Induction Medium 650 with the test articles
Day 5	Wednesday morning	End of the incubation with the test articles Incubate the cells with the test substrates

3.4 UPTAKE AND TRANSPORT studies: use of HepaRG® IN SUSPENSION

- After thawing and counting of differentiated HepaRG® cells (Sec 2), cells can be used for uptake and transport studies in suspension according to your standard protocol with human hepatocytes.
- Incubate the cells with the test substrates according to your protocol for uptake and transport studies.

SUSPENSION	Day 0	<ul style="list-style-type: none"> - Thaw the cells in HepaRG[®] Thaw, Seed, and General Purpose 670 - Incubate the cells with the test substrates according to your protocol
-------------------	--------------	--

3.5 TOXICITY studies: use of HepaRG[®] IN MONOLAYER

3.5.1 Cell seeding

See 3.2.1

3.5.2 Culture and maintenance for toxicity study

- One day after thawing, observe cell morphology under phase-contrast microscope, and when possible, take photomicrographs.
- Renew the HepaRG[®] Thaw, Seed, and General Purpose Medium 670 (for method, see 3.2.2).
- Maintain the HepaRG[®] cells in HepaRG[®] Thaw, Seed, and General Purpose Medium 670 until the use of cells at day 7.
- Renew the HepaRG[®] Thaw, Seed, and General Purpose Medium 670, and incubate the cells in monolayer with the test articles according to your protocol.

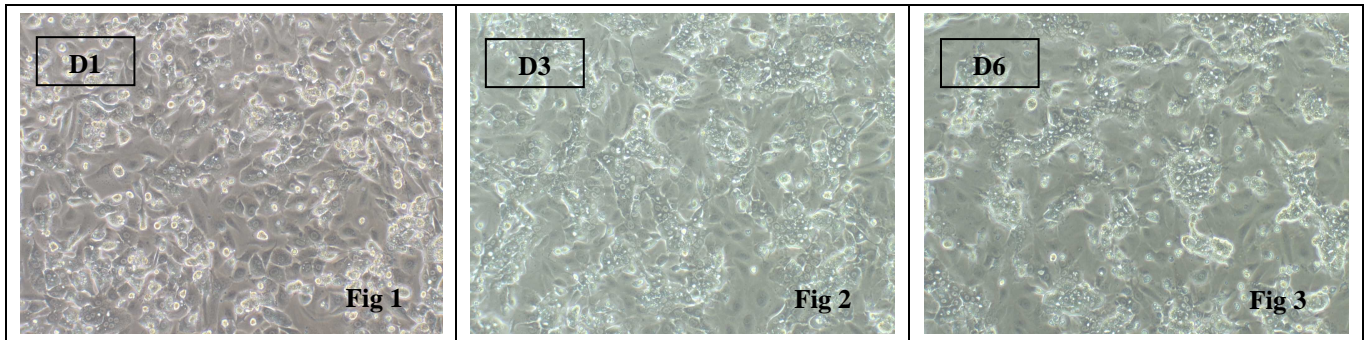
3.5.3 Suggested timeline for toxicity studies

Day 0	Thursday	Thaw and seed the cells using HepaRG [®] Thaw, Seed, and General Purpose Medium 670
Day 1	Friday	Renew the HepaRG [®] Thaw, Seed, and General Purpose Medium 670
Day 4	Monday	Renew the HepaRG [®] Thaw, Seed, and General Purpose Medium 670
Day 6	Wednesday	Renew the HepaRG [®] Thaw, Seed, and General Purpose Medium 670
Day 7	Thursday	Renew the Thaw, Seed, and General Purpose Medium 670 and incubate the cells in monolayer with the test articles according to your protocol

See the next page for photomicrographs of HepaRG[®] cells in culture at different time points.

SECTION 3: CELL MORPHOLOGY

- After 1 day of culture, hepatocyte-like cells appear in small, differentiated colonies, individualized (fig 1).
- After 3-4 days of culture, a restructuring of cell monolayer can be observed with a hepatocyte-like cells' organization in clusters (fig 2).
- 6-7 days after plating, hepatocyte-like cells are organized in well-delineated trabeculae with many bright canaliculi-like structures (fig 3).



REFERENCES

- 2002**
Gripou P., & al, *Proc. Natl. Acad. Sci. USA*, 99(24):15655-60, 2002
- 2003**
Sureau C. & al, *J Virol.*, 77(9): 5519-23, 2003
- 2004**
Parent R. & al, *Gastroenterology*, 126(4):1147-56, 2004
- 2005**
Barraud L. & al, *J Hepatol.*, 42(5):736-43, 2005
Gripou P. & al, *J Virol.*, 79(3):1613-22, 2005
Jaoudé G.A. & al, *J Virol.*, 79(16):10460-6, 2005
- 2006**
Aninat C. & al, *Drug Metab. Dispos.*, 34(1):75-83, 2006
Antoun J. & al, *FEBS Lett.*, 580(14):3361-7, 2006
Blanchet M. & al, *J Virol.*, 80(24):11935-45, 2006
Engelke M. & al, *Hepatology*, 43(4):750-60, 2006
Le Vee M. & al, *Eur. J Pharm. Sci.*, 28(1-2):109-17, 2006
Rabe B. & al, *J Virol.*, 80(11):5465-73, 2006
Troadec M.B. & al, *Genomics*, 87(1):93-103, 2006
- 2007**
Abou-Jaoudé G. & al, *J Virol.*, 81(23):13057-66, 2007
Cerec V. & al, *Hepatology*, 45(4):957-67, 2007
Glebe D. & al, *World J Gastroenterol.*, 13(1):22-38, 2007
Guillouzo A. & al, *Chem. Biol. Interact.*, 168(1):66-73, 2007
Kirkland D. & al, *Mutat. Res.*, 628(1):31-55, 2007
Nagasawa M. & al, *Biochem. Pharmacol.*, 74(12):1738-46, 2007
Parent R. & al, *Cancer Res.*, 67(9):4337-45, 2007
Schulze A. & al, *Hepatology*, 46(6):1759-68, 2007
- 2008**
Aninat C. & al, *Crit. Care Med.*, 36(3):848-54, 2008
Antoun J. & al, *J Lipid Res.*, 49(10):2135-41, 2008
Guillouzo A., *Ann. Pharm. Fr.*, 66(5-6):288-95, 2008
Guillouzo A. & al, *Expert Opin. Drug Metab. Toxicol.*, 4(10):1279-94, 2008
Jossé R. & al, *Drug Metab. Dispos.*, 36(6):1111-8, 2008
Kanebratt K.P. & al, *Drug Metab. Dispos.*, 36(1):137-45, 2008
Kanebratt K.P. & al, *Drug Metab. Dispos.*, 36(7):1444-52, 2008
Le Vee M. & al, *Drug Metab. Dispos.*, 36(2):217-22, 2008
Lucifora J. & al, *J Gen. Virol.*, 89(Pt 8): 1819-28, 2008
Maire M. & al, *Biochem. Biophys. Res. Commun.*, 368(3):556-62, 2008
Parent R. & al, *Genome Biol.*, 9(1):R19, 2008
Petit E. & al, *Toxicol. In Vitro*, 22(3):632-42, 2008
- 2009**
Bazin E. & al, *Environ. Mol. Mutagen.*, 51(3):251-259, 2009
Hantz O. & al, *J Gen. Virol.*, 90(Pt 1):127-35, 2009
Kaneko A. & al, *Xenobiotica*, 39(11):803-10, 2009
Lambert C.B. & al, *Toxicol. Appl. Pharmacol.*, 234(3):345-60, 2009
Lambert C.B. & al, *Toxicol. in vitro*, 23(3):466-75, 2009
Le Duff Y. & al, *J Virol.*, 83(23):12443-51, 2009
Legendre C. & al, *Eur. J Cancer*, 45(16):2882-92, 2009
Lepère-Douard C. & al, *J Virol.*, 83(23):11819-29, 2009
McGinnity D.F. & al, *Drug Metab. Dispos.*, 37(6):1259-68, 2009
Narayan R. & al, *J Proteome Res.*, 8(1):118-22, 2009
Ndongo N. & al, *J Med. Virol.* 1(10):1726-33, 2009
Turpeinen M. & al, *Toxicol In Vitro*, 23(4):748-53, 2009
Villet S. & al, *Gastroenterology*, 136(1):168-76, 2009
Vincent I.E. & al, *Antivir. Ther.*, 14(1):131-5, 2009
- 2010**
Andersson T.B., *Methods Mol. Biol.*, 640:375-87, 2010
Antherieu S. & al, *Drug Metab. Dispos.*, 38(3):516-25, 2010
Bednarkiewicz A. & al, *J Biomed. Opt.*, 15(2):028002, 2010
Dumont J. & al, *Toxicol. Appl. Pharmacol.*, 245(2):256-63, 2010
Dumont J. & al, *Toxicol. Appl. Pharmacol.*, 249(1):91-100, 2010
Everett R.D., *J Virol.*, 84(7):3695-8, 2010
Gaboriau F. & al, *Biometals*, 23(2):231-45, 2010
Grime K. & al, *Curr. Drug Metab.*, 11(10):870-85, 2010
Guguen-Guillouzo C. & al, *Toxicology*, 270(1):3-9, 2010
Guguen-Guillouzo C., Guillouzo A., *Methods Mol. Biol.*, 640:1-40, 2010
Hart S.N. & al, *Drug Metab. Dispos.*, 38(6):988-94, 2010
Jennen D.G. & al, *Toxicol. Sci.*, 115(1):66-79, 2010
Jiang L. & al, *Transplant Proc*, 42(9):3773-8, 2010
Kaneko A. & al, *Xenobiotica*, 40(12):791-9, 2010
Laurent V. & al, *Biotechnol. J.*, 5(3):314-20, 2010
Le Hegarat L. & al, *Mutagenesis*, 25(6):555-60, 2010
Le Vee M. & al, *Toxicol. in Vitro*, 24(6):1775-81, 2010
Lucifora J. & al, *Hepatology*, 51(1):63-72, 2010
Macovei A. & al, *J Virol.*, 84(1):243-53, 2010
Marion M.J., *Methods Mol. Biol.*, 640:261-72, 2010
Mercey E. & al, *Biomaterials*, 31(12):3156-65, 2010
Ni Y. & al, *J Virol.*, 84(8):3879-88, 2010
Rodriguez-Lucena D. & al, *Bioorg. Med. Chem.*, 18(2):689-95, 2010
Rouge P. & al, *J Enzyme Inhib. Med. Chem.*, 25(2):216-27, 2010
Shulze A. & al, *J Virol.*, 84(4):1989-2000, 2010
Sureau C., *Methods Mol. Biol.*, 640:463-73, 2010
Tajri K. & al, *Antiviral Res.*, 87(1):40-9, 2010
Tuoi Do T.H. & al, *Alcohol Clin. Exp. Res.*, [Epub ahead of print]
Wang L. & al, *Drug Metab. Dispos.*, 38(12):2226-31, 2010
Xie Y. & al, *Pathol. Biol.*, 58(4):301-7, 2010
- 2011**
Antherieu S & al, *Hepatology*, 53(6):1895-905, 2011
Ceelen L. & al, *Biochem. Pharmacol.*, 81(10):1255-61, 2011
Darnell M & al, *Drug Metab. Dispos.*, 39(7):1131-8, 2011
Hoekstra R & al, *Int. J. Biochem. Cell Biol.*, 43(10):1483-9, 2011
Latxague L. & al, *J Enzyme Inhib. Med. Chem.*, 26(2):204-15, 2011
Limonciel A & al, *Toxicol. In Vitro*, 25(8):1855-62, 2011
Lübberstedt M. & al, *J Pharmacol. Toxicol. Methods*, 63(1):59-68, 2011
Lucifora J. & al, *J. Hepatol.*, 55(5):996-1003, 2011
Maded S & al, *Drug Metab. Dispos.*, 39(10):1987-96, 2011
McGill M.R. & al, *Hepatology*, 53(3):974-82, 2011
Ndongo-Thiam N & al, *Hepatology*, 54(2):406-17, 2011
Pfühler S & al, *Mutat. Res.*, 723(2):101-7, 2011
Pernelle K & al, *Toxicol. Appl. Pharmacol.*, 254(3):256-66, 2011
Picard N & al, *Xenobiotica*, 41(9):752-7, 2011
Pawlowska M, Augustin E, *Postepy Hig Med Dosw.*, 65:367-376, 2011
Rogue A & al, *PLoS One*, 6(4):e18816, 2011
Sirma H & al, *Gastroenterology*, 141(1):326-337, 2011
Templeton IE & al, *Drug Metab. Dispos.*, 39(10):1921-9, 2011

2012

Abass K & al, *Toxicology*, 294(1):17-26, 2012
Albaugh DR & al, *Drug Metab. Dispos.*, 2012 [Epub ahead of print]
Andersson TB & al, *Expert Opin. Drug Metab. Toxicol.*, 2012 [Epub ahead of print]
Billioud G & al, *J. Hepatol.*, 2012 [Epub ahead of print]
Gerets HH & al, *Cell Biol. Toxicol.*, 2012 [Epub ahead of print]
Josse R & al, *Mutagenesis*, 27(3):295-304, 2012

Josse R & al, *Toxicol. Appl. Pharmacol.*, 258(2):176-87, 2012
Lereau M & al, *J. Gen. Virol.*, 93(Pt 3):640-50, 2012
Lescoat G & al, *Chem. Biol. Interact.*, 195(2):165-72, 2012
Li D & al, *Mol. Pharmacol.*, 81(1):86-96, 2012
Rogue A & al, *Drug Metab. Dispos.*, 40(1):151-8, 2012
Rossi C & al, *Toxicol. In Vitro*, 2012 [Epub ahead of print]
Schulze A & al, *Hepatology*, 55(2):373-83, 2012
Zanelli U & al, *Drug Metab. Dispos.*, 40(1):104-10, 2012