

Certificate of Analysis

Anti-P2X3 Receptor Antibody

P2RX3, P2X purinoceptor 3, ATP Receptor

Cat #: APR-016 | **Host:** Rabbit | **Type:** Polyclonal | **Form:** Lyophilized

Applications: ICC, IF, IFC, IHC, WB

Reactivity: H, M, R

May also work in: IP

Application key: CBE- Cell-based ELISA, FC- Flow cytometry, ICC- Immunocytochemistry, IE- Indirect ELISA, IF- Immunofluorescence, IFC- Indirect flow cytometry, IHC- Immunohistochemistry, IP- Immunoprecipitation, LCI- Live cell imaging, N- Neutralization, WB- Western blot

Species reactivity key: H- Human, M- Mouse, R- Rat

For research purposes only, not for human use

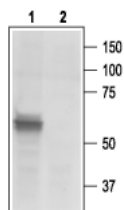
Properties

Immunogen	Peptide (C)VEKQSTDSGAYSIGH, corresponding to amino acid residues 383-397 of rat P2X3 receptor (Accession P49654). Intracellular, C-terminus.
Homology	Mouse - identical; human - 13/15 amino acid residues identical.
RRID	AB_2313760.
Purity	Affinity purified on immobilized antigen.
Form	Lyophilized powder. Reconstituted antibody contains phosphate buffered saline (PBS), pH 7.4, 1% BSA, 0.05% NaN ₃ .
Isotype	Rabbit IgG.
Standard quality control of each lot	Western blot analysis.
Peptide confirmation	Confirmed by amino acid analysis and mass spectrometry.
Storage before reconstitution	The antibody ships as a lyophilized powder at room temperature. Upon arrival, it should be stored at -20°C.
Reconstitution	25 µl, 50 µl or 0.2 ml double distilled water (DDW), depending on the sample size.
Antibody concentration after reconstitution	0.8 mg/ml.
Storage after reconstitution	The reconstituted solution can be stored at 4°C for up to 1 week. For longer periods, small aliquots should be stored at -20°C. Avoid multiple freezing and thawing. Centrifuge all antibody preparations before use (10000 x g 5 min).

Applications

Western blot

Rat DRG lysates (1:200-1:500).



Western blot analysis of rat DRG lysates:

1. **Anti-P2X3 Receptor Antibody** (APR-016), (1:200).
2. Anti-P2X3 Receptor Antibody, preincubated with [P2X3 Receptor Blocking Peptide](#) (#BLP-PR016).

Immunohistochemistry

Rat embryo DRG formalin frozen sections.

Immunocytochemistry

Fixed mouse trigeminal neurons (1:200) ([D'Arco, M. et al. \(2007\) J. Neurosci. 27](#), 8190.).

Indirect flow cytometry

Human CD4+ and ckit+ cells ([Kazakova, R.R. et al. \(2011\) Bull. Exp. Biol. Med. 151](#), 33.).

Last update: 02/01/2022